

**CORRECTION**

**Open Access**

# Correction: A comparison of statistical methods for the detection of hepatocellular carcinoma based on serum biomarkers and clinical variables

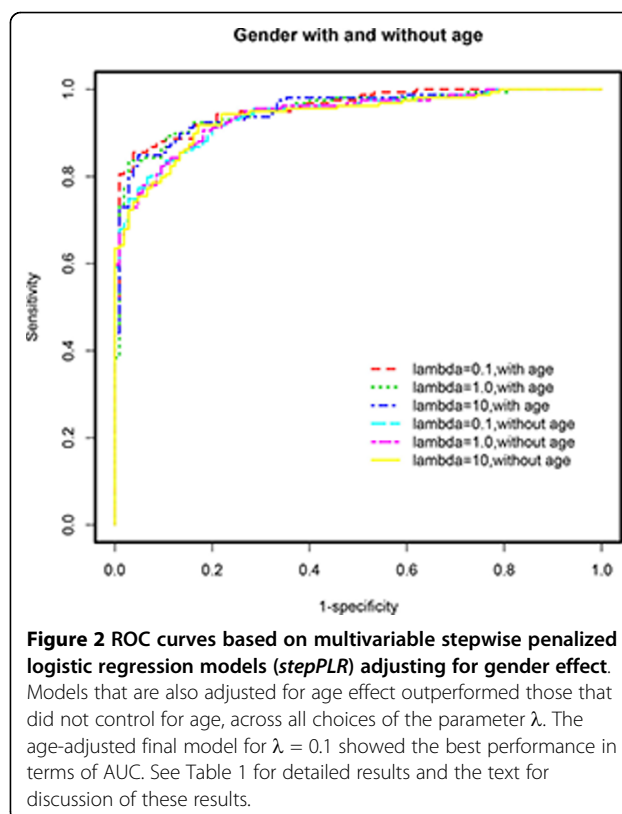
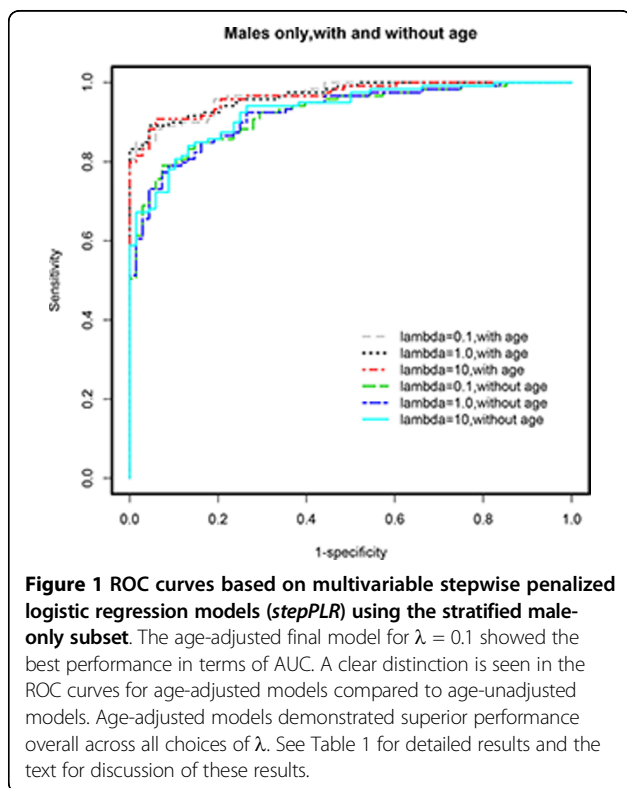
Mengjun Wang<sup>1</sup>, Anand Mehta<sup>1</sup>, Timothy M Block<sup>1</sup>, Jorge Marrero<sup>2</sup>, Adrian M Di Bisceglie<sup>3</sup>, Karthik Devarajan<sup>4\*</sup>

From IEEE International Conference on Bioinformatics and Biomedicine 2012  
Philadelphia, PA, USA. 4-7 October 2012

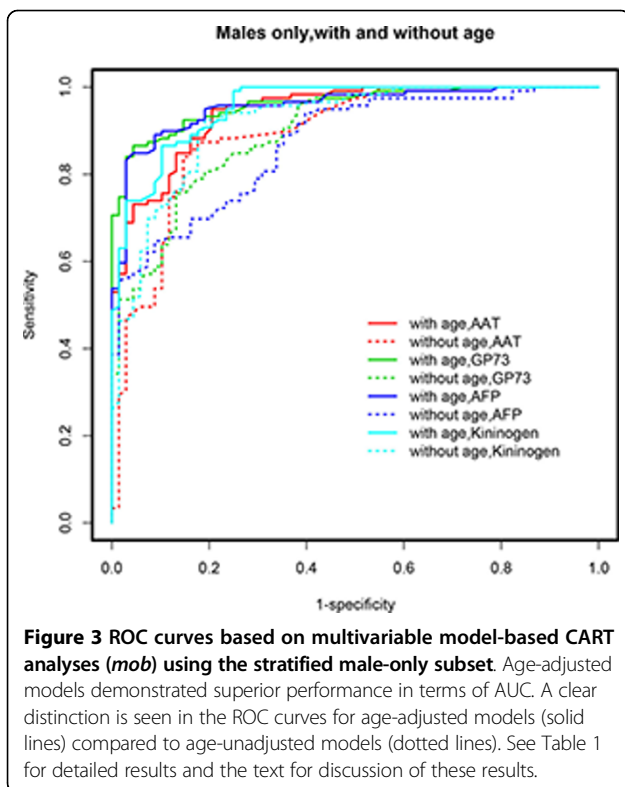
## Correction

Our original article was published in *BMC Medical Genomics* in the supplement containing selected articles from the IEEE International Conference on Bioinformatics and Biomedicine 2012 (IEEE BIBM 2012) [1]. After publication,

it was noticed that the ROC curves in Figures 1, 2, 3, 4 displayed Sensitivity vs. Specificity rather than Sensitivity vs. 1-Specificity, as labeled. These figures have been reproduced here in the correct format, displaying Sensitivity vs. 1-Specificity, and should replace the corresponding figures in the original article. However, AUC values remain unaffected by this change.



<sup>4</sup>Department of Biostatistics and Bioinformatics, Fox Chase Cancer Center, 333 Cottman Avenue, Philadelphia, PA 18901, USA  
Full list of author information is available at the end of the article



#### Acknowledgements

This article has been published as part of *BMC Medical Genomics* Volume 6 Supplement 3, 2013: Selected articles from the IEEE International Conference on Bioinformatics and Biomedicine 2012: Medical Genomics. The full contents of the supplement are available online at <http://www.biomedcentral.com/bmcmmedgenomics/supplements/6/S3>.

#### Authors' details

<sup>1</sup>Drexel University College of Medicine, 3508 Old Easton Rd, Doylestown, PA 18902, USA. <sup>2</sup>Division of Gastroenterology, University of Michigan, 3912 Taubman Center, Ann Arbor, MI 48109, USA. <sup>3</sup>Saint Louis University School of Medicine, 1402 S. Grand FDT 12th Floor, St. Louis, MO 63104, USA. <sup>4</sup>Department of Biostatistics and Bioinformatics, Fox Chase Cancer Center, 333 Cottman Avenue, Philadelphia, PA 18901, USA.

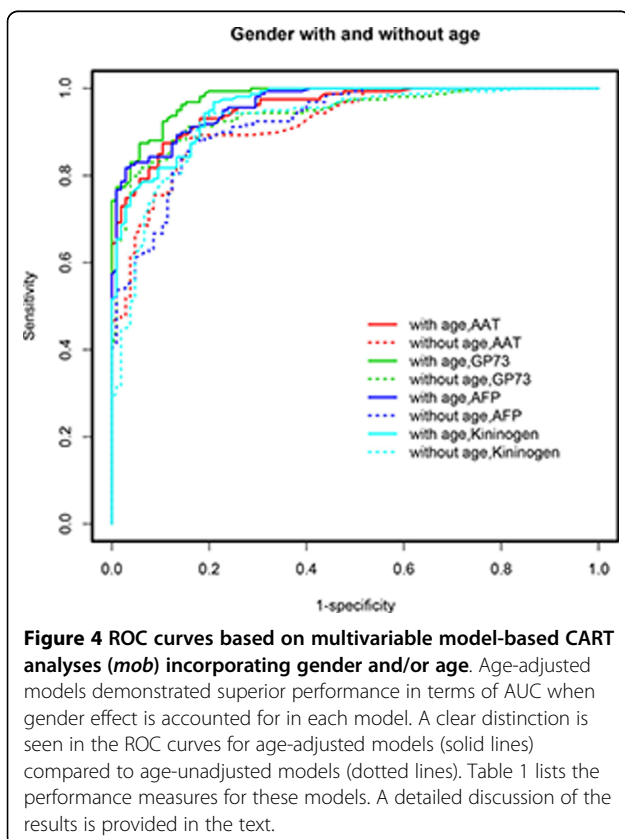
Published: 20 December 2013

#### Reference

1. Wang M, Mehta A, Block TM, Marrero J, Di Bisceglie AM, Devarajan K: A comparison of statistical methods for the detection of hepatocellular carcinoma based on serum biomarkers and clinical variables. *BMC Medical Genomics* 2013, **6**(Suppl 3):S9.

doi:10.1186/1755-8794-6-S3-S11

**Cite this article as:** Wang et al.: Correction: A comparison of statistical methods for the detection of hepatocellular carcinoma based on serum biomarkers and clinical variables. *BMC Medical Genomics* 2013 **6**(Suppl 3):S11.



**Submit your next manuscript to BioMed Central and take full advantage of:**

- Convenient online submission
- Thorough peer review
- No space constraints or color figure charges
- Immediate publication on acceptance
- Inclusion in PubMed, CAS, Scopus and Google Scholar
- Research which is freely available for redistribution

Submit your manuscript at  
[www.biomedcentral.com/submit](http://www.biomedcentral.com/submit)

